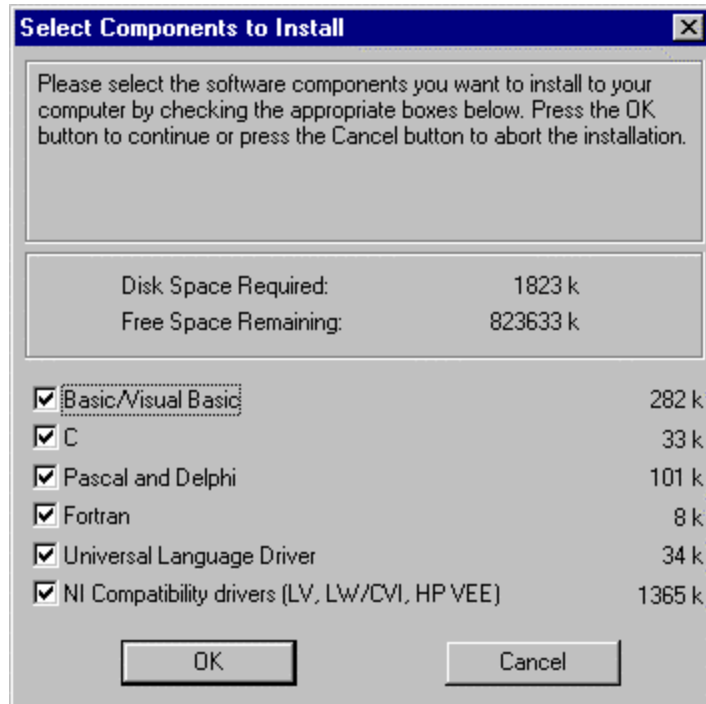


## Can I use a GPIB card I buy from Keithley with LabVIEW or LabWindows/CVI?

When installing the drivers from the floppy diskette that ships with each GPIB board, be sure to check off the NI Compatibility drivers as shown in the screen shot below. This selection will install some DLL files to allow IEEE-488.1 and IEEE-488.2 commands from LabVIEW or LabWindows/CVI to operate. This makes the Keithley GPIB card compatible with the NI-488.2 API.

If your driver diskette is version 6.01 or higher, this selection will also install a passport for use with NI-VISA 2.5 or higher. Passports for NI-VISA are necessary for use of VXIPnP and IVI instrument drivers.

Below is a screen shot from a diskette installation:



If your driver diskette is misplaced, the drivers can also be obtained from the download center of the web site. This downloaded version has contained the passport for NI-VISA 2.5 or higher for some time.

Below is a screen shot when installing from a downloaded driver:

